

Quick Start Guide

Thank you for purchasing Nikki the Nursing Manikin with Auscultation.

How would you like to start?

1. I would like to begin by using Nikki and the NursingScope with their default sounds.

Nikki can be used out of the box, with minimal set-up. If you don't need to change the default auscultation sounds right away, please follow these steps:

- a. Turn on the NursingScope by pressing either the plus or minus sign located on the chest piece.
- b. A voice prompt plays "**System activation. Mode one. WiFi initialization failed**".
- c. Now the NursingScope is ready to use, you may begin auscultating Nikki.



2. I would like to begin by changing the default sounds in the library.

If you wish to change the default heart, lung and bowel sounds, please proceed with the following steps.

a. Laptop set-up

- Turn on the Acer laptop.
- Click on the symbol representing the Wi-Fi connection in the bottom-right taskbar on the desktop and connect to your local Wi-Fi network.
- Double click on the SimScope symbol located on the desktop.
- You will be asked to fill out the registration form, please fill in all data.



b. Router set-up

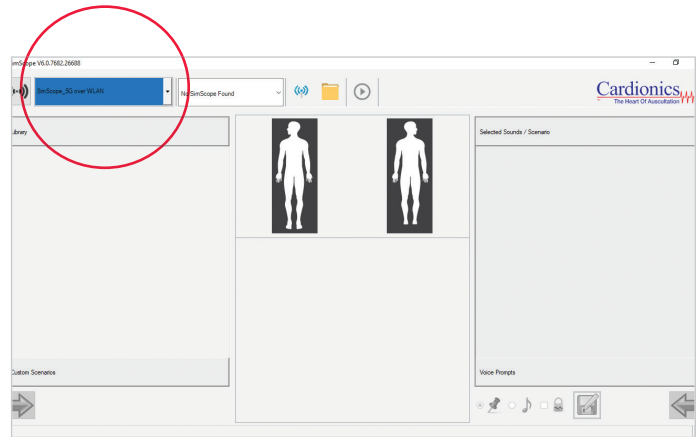
- Turn on the TP Link router by connecting it to the Acer laptop with the supplied USB cable, or simply plug it into an electricity outlet. Let it run for 1-2 minutes.
- Now instead of using your local connection, please connect to the TP Link router network. In order to do that, go back to the Wi-Fi symbol in the bottom-right task bar on the Acer desktop and connect to the following network:

Network Name: SimScope_5G, **Password:** Cardionics



c. NursingScope set-up

- Turn on the NursingScope by pressing either the plus or minus sign located on the chest piece.
- A voice prompt plays “**System activation. Mode one. Wifi connected**”.
- Please make sure that “**SimScope_5G**” network name is displayed in the drop down list in the upper left corner of the software.
- Please bear in mind that there is no on/off button on the NursingScope. It will turn itself off automatically once the session time is over. The session time can be changed in the Wi-Fi settings in the software.



- Edit the default auscultation settings by picking the sounds from the library located on the left hand side and clicking an arrow at the bottom. Don't forget to click “**save**” button, which looks like a little disc.
- Now the NursingScope is ready to use with the newly assigned sounds, you may begin auscultating.

➤ TROUBLESHOOTING TIPS

If the NursingScope is not connecting try the following:

1. NursingScope – session time

Make sure the NursingScope is not powering down in the meantime, its default session time is set to 4.5 minutes. To make sure it's active, put it on and press either the plus or minus sign located on the chest piece. You should hear a voice prompt saying “System activation. Mode one”.

2. NursingScope – battery

If you've pressed the plus or minus sign and you don't hear anything, the battery has to be exchanged. Attention: Battery life varies greatly between brands and types, therefore please use only AAA alkaline batteries. We recommend the Energizer

Ultimate Lithium, which will power the NursingScope for up to four hours.

3. Router

Check whether the router is properly connected and working, it should display a yellow light.

4. Network connection

Check whether the router network “SimScope_5G” is selected in the list of your available network connections (bottom-right taskbar on the desktop).

If you are still unable to connect your NursingScope please contact your sales representative for further assistance.



SCAN THIS QR-CODE TO LEARN MORE ABOUT NIKKI AND
ACCESS THIS START GUIDE IN YOUR LANGUAGE

