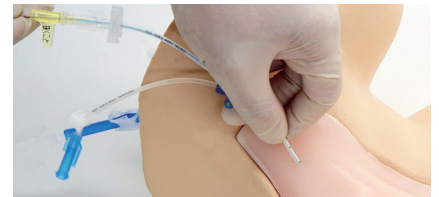
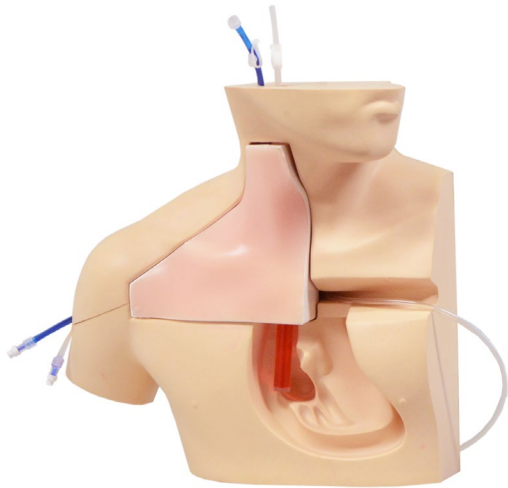


M93C

CVC Insertion Simulator III

CVC III facilitates a sequence of uninterrupted simulation experience for specialist training

From aseptic field preparation to final catheter placement



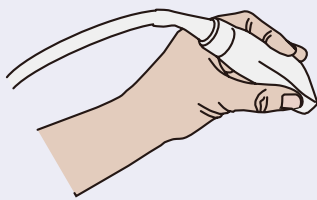
FEATURES

- 1 | Insertion practice is repeatable to obtain the best technique for patient safety.
- 2 | Both landmark guided insertion and ultrasound guided techniques can be practiced.
- 3 | The frictionless tissue-like simulation pad to facilitate the realistic sensation of CVC placement.

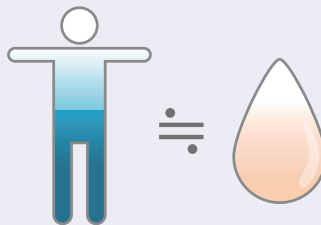
SKILLS

- Take complete steps to a successful CVC insertion
- | Perform hand hygiene practices and prepare aseptic field
 - | Decide on insertion site via ultrasound guidance or observation and palpation of landmarks
 - | Insertion under ultrasound guidance or via landmark technique
 - | Confirm flashback
 - | Advance guidewire and sheath
 - | Insert catheter

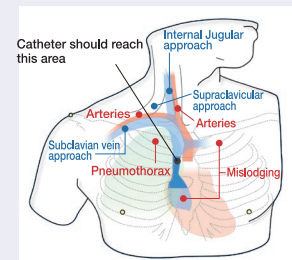
KEY FEATURES



Ultrasound compatible



Pad material simulates features of human tissue



Anatomically accurate features including 3 insertion sites and rib cage

DESCRIPTIONS

SPECIFICATIONS

Size: W40 x D20 x H 34 cm
W15.7 x D8 x H13.5 inch

SET INCLUDES

1 male upper torso manikin	2 vein tube (blue): 2 type
2 CVC placement pad	2 vein pipe
1 skin for cannulation training	1 pulsation unit (for landmark technique)
1 transparent anatomical block	1 irrigation bottle (for UG technique)
2 artery tube (transparent): 2 type	1 plastic jar

MATERIALS

Soft resin, hydrogel, hard resin
Latex free

RECOMMENDED DEVICES

Ultrasound machine and needles are not included.

REPLACEMENT PARTS

11347-210	2 introductory ultrasound training block REAL VESSELS
11347-240	2 CVC placement pads
11347-260	1 pulsation unit (for M93UB)
11347-320	1 irrigation bottle